

Speedi

Wings & Wheels

www.speedi.tv

August / September 2018

Issue No: 39

173 PAGES OF ACTION

Best viewed
as Full Size
Single Page

News

Events

Features

Show Reports

Reviews



AIR & SPACE - DULLES



77 Pages from AirVenture 2018

FREE!
Online
Magazine

THIS MONTH:

Air & Space - Dulles

EAA AirVenture 2018

and Much More

NASA Image of the Day

Hubble Takes Portrait of Opulent Ring World Saturn is by far the solar system's most photogenic planet, and in this latest Hubble Space Telescope snapshot it is especially so because Saturn's magnificent ring system is near its maximum tilt toward Earth (which was in 2017).

Hubble was used to observe the planet on June 6, 2018, when Saturn was only approximately 1.36 billion miles from Earth, nearly as close to us as it ever gets.



The Important Details:

Speedi Wings & Wheels is a free online magazine. The entire contents of each issue are © copyright. You may download, view, copy and print this publication subject to the following: (1) the Documents may be used solely for personal, informational, non-commercial purposes; and (2) and will not be copied or posted on any networked computer or broadcast in any media; and (3) the Documents may not be modified or altered in any way. Except as expressly provided above, you may not use, download, upload, copy, print, display, perform, reproduce, publish, license, post, transmit or distribute any information from this publication in whole or in part without the prior written permission of Speedi TV. Published by Speedi TV - 12 Cambridge Cottages, Richmond on Thames, TW9 3AY, UK - email: speedimag@gmail.com

We are happy to accept photographs and articles by email at news@speedi.tv with a view to including them in Speedi Wings & Wheels. However, all submissions are sent at the contributors own risk and Speedi Wings & Wheels will not be liable for any loss or damage, however caused. See also Privacy and Terms & Conditions on the Speedi Wings & Wheels [website](http://www.speedi.tv)

Editorial Team: North America Editor – Steve Wood West Coast Contributors - Jim (Flybum) Pratt, Tim Sowell Canada - Jim Swan Cruisin' & Hot Rod's - Gary Rosier UK Team - The Gremlins at Kew

Editorial

Welcome to the August / September 2018 issue of *Speedi Wings & Wheels*.

Take a look at our 'Content's page to find out more about what's in this issue. The magazine is published bi-monthly during the last week of February, April, June, August, October and December.



In this issue we are featuring EAA AirVenture 2018 - the largest general aviation air show in the world - Plus much more . . .

Take a look at the next page - the magazine index - for more details

Blue Sky's and Safe Flying.

The Speedi Team

*Speedi Wings & Wheels is a wide screen format magazine
Best viewed in full screen single page HD mode*

Boeing and FedEx Express announced a new order for 12 767 Freighters and 12 777 Freighters as the world's largest air cargo carrier continues to invest in the industry's most capable freighters to better serve its customers.

7 AirVenture 2018 - Part 1 - 52

Speedi

Wings & Wheels

[CONTENTS](#)


82 Air & Space, Dulles



Cover Photo: Gary Rosier

7 AirVenture 2018 - Part 1: The annual EAA AirVenture gathering is the world's largest general aviation event. Gary Rosier traveled a long long way from Florida to Oshkosh, WI to enjoy the fun . . .

82 Air & Space, Dulles: The Smithsonian National Air & Space Museum at Washington, Dulles airport is an aviation enthusiasts dream. Gary Rosier stopped off there on his epic road trip from Florida to Wisconsin . . .

136 AirVenture 2018 - Part 2: Don Eller also traveled all the way from Florida to catch the action at EAA AirVenture 2018. Enjoy a different take of the event . . .

Regular Features:

5 AvNews: Snippets of aviation related news

59 Speedi's Blog: Steve Wood looks at 'what's hot and what's not' in the world of aviation

60 News from the Barn: News of the events & 'happenings' at Spruce Creek Fly-in.

113 Nose Art & Numbers: Readers fun machines

114 AutoNews: Top titbits of Auto News

117 Gone Cruisin': Hot Rods & Cruisers and more . . .

161 SpeediCity: Fun and action from Daytona Beach

Boeing Sending Last Shuttle Commander Chris Ferguson Back to Space

Veteran of three space shuttle missions will be first corporate astronaut to fly a new spacecraft with NASA astronauts

HOUSTON, Aug. 3, 2018



Chris Ferguson, who led the final space shuttle mission, will make his fourth spaceflight when he and NASA astronauts Eric Boe and Nicole Mann take the new Boeing [NYSE: BA] CST-100 Starliner commercial crew spacecraft to the International Space Station.

The three pioneers will help restore American access to space from U.S. soil, a capability that ended when the shuttle was retired seven years ago. Mann will also make history as the first female astronaut on the inaugural crewed flight of a new U.S. spacecraft.

"We're immensely proud of Chris and thrilled he will be part of first Starliner crew," Leanne Caret, president and CEO of Boeing Defense, Space & Security, said. "We congratulate all the astronauts chosen to fly to the space station on commercially developed systems. We're taking important steps for this nation and toward development of a thriving commercial space ecosystem."

Ferguson has been an integral part of the Starliner program since retiring from NASA and joining Boeing in 2011. He spent more than 40 days in space for NASA during three shuttle missions.

"The engineer in me always thought if I'm not flying a spaceship, I ought to be part of the team building one," Ferguson said. "My fingerprints are all over the Starliner and I'm thrilled to get the chance to go back to space on a vehicle that I helped design from the ground up. Riding along with me are all of the members of the Boeing team who have put their hearts and souls into this spacecraft."

The Starliner flight will be Mann's first journey to space. Boe will be making his third trip to space. Mann is a U.S. Marine Corps lieutenant colonel and pilot of the Boeing F/A-18 Hornet fighter jet, while Boe is a retired U.S. Air Force colonel who was a test pilot on the Boeing F-15. He also helped make the space station a home by

delivering a kitchen, bathroom, sleeping quarters, water recycling system and exercise machine during the STS-126 mission.

The development of a safe, reliable, and cost-effective solution for crew transportation services to and from the International Space Station will allow the on-orbit research

facility to continue to fulfill its promise as a world-class laboratory. With NASA as the anchor customer, Boeing's Starliner is setting the foundation for commercial passenger flights to and from low-Earth orbit destinations, to include international astronauts, scientists and even tourists.

Photo info:

Astronauts (from left) Eric Boe, Chris Ferguson and Nicole Mann will be the inaugural crew of the Boeing CST-100 Starliner when it begins service to the International Space Station. Ferguson, who led NASA's final Space Shuttle mission in 2011, has made three prior trips to space; Boe is a retired U.S. Air Force Colonel and F-15 pilot making his third spaceflight; Mann is a U.S. Marine Corps Lt. Colonel and F/A-18 Hornet pilot. She will be the first woman to fly the inaugural mission of a new spacecraft. (Bob Ferguson, Boeing photo)

The BelugaXL airlifter brings a "smile" to Airbus' production network

28 July 2018 - Toulouse

The successful first flight of Airbus' BelugaXL oversize airlifter marks an important milestone in further enhancing the company's industrial network to support its production output – including the ramp-up in assembly rates for single-aisle and widebody commercial jetliners.

With an instantly recognisable livery – featuring a whale-type smile that was chosen by Airbus employees in a vote that attracted almost 21,000 participants – the no. 1 BelugaXL's 19 July maiden takeoff initiated a 10-month, 750-flight hour certification campaign that will use two of the highly modified derivatives of Airbus' A330-200 freighter.

"The aircraft behaves really well in flight," said Christophe Cail, Airbus Chief Test Pilot and captain for the four-hour, 11-minute first flight from the company's Toulouse, France headquarters site. "It's impressive how close the BelugaXL's performance is to what we experienced in the ground-based flight simulators. First flights take a lot of preparation and we are just the tip of the iceberg, so 'thank you' to the entire team. It's only together that we can make it fly."



The BelugaXL has 30 percent more capacity than Airbus' current Beluga ST airlifters

As the replacement for Airbus' current Beluga ST airlifters – which were derived from earlier-production A300-600 jetliners – the BelugaXL features a fuselage that is seven metres longer and an enlarged upper fuselage that is one metre wider.

BelugaXL's greater size enables the new-generation airlifter to accommodate a set of A350 XWB wings, for example, speeding up their transport from the Broughton, UK production site to the programme's final assembly line in Toulouse. The aircraft also can carry the A350 XWB's largest fuselage section with room to spare. Additionally, the BelugaXL's 30 percent extra capacity compared to the Beluga ST provides potential to meet ramp-up

needs in meeting the global customer demand for Airbus single-aisle and widebody jetliners.

Once in service, the fleet of five BelugaXLs will replace the similar number of Beluga A300-600 ST airlifters operated by Airbus Transport International – Airbus' fully-owned oversize transport subsidiary. Each aircraft will perform between 900 and 1,000 flights per year, logging some 1,700 to 1,800 hours annually in servicing 11 line stations at locations across the company's European industrial network.

The initial BelugaXL to enter operation in 2019 with Airbus Transport International will be the second built aircraft, followed by two BelugaXLs during 2020, and one each in 2021 and 2022 – enabling the Beluga STs to be retired during the 2021-2023 timeframe.

RAF 100

RAF100
FLYPAST
10 JULY 2018

UP TO 100 AIRCRAFT
TO INCLUDE ...

COMMEMORATE
CELEBRATE
INSPIRE

Subject to weather, aircraft serviceability
and operational commitments

Puma HC2	
Chinook HC4	
Juno H135	
Jupiter H145	
Dakota	
Lancaster	
Spitfire	
Hurricane	
Prefect T1	
Tucano T1	
Shadow R1	
Hercules C-130J	
A400M Atlas	
C-17 Globemaster	
BAE146	
Sentinel	
Voyager	
Rivet Joint RC-135W	
E-3D Sentry	
Hawk T1	
Hawk T2	
Tornado GR4	
Lightning	
Typhoon FGR4	
Red Arrows	

**ROYAL
AIR FORCE**



down the Mall and it all finished off with an unbelievable flypast over Buckingham Palace with over 100 iconic aircraft used in the RAF - including the brand new Lightning.

It was a momentous day a once in a lifetime experience. It was incredible to see the dedication and respect our people show towards the Royal Air Force and our continual efforts to protect and serve our nation. The passion and respect the general public showed on that day was magnificent, over 70,000 of you filled the Mall to the brim showing your support waving flags and cheering as the parade

10 JULY CENTENARY CELEBRATIONS

On 10 July, one hundred days after its official 100th birthday, the RAF flew over London for its centrepiece event, the RAF100 Parade and Flypast.

Over a thousand servicemen and women took part in a parade on The Mall at 11:25am.

Her Majesty The Queen, accompanied by The Prince of Wales, presented a new Queen's Colour to the Royal Air Force at a ceremony to mark its centenary, on the forecourt of Buckingham Palace.

At 1:00pm The Queen, The Prince of Wales, The Duchess of Cornwall, other Members of the Royal Family and members of the public witnessed the historic flypast where up to 100 aircraft, representing the RAF's history, flew over Buckingham Palace.



It was a spectacle never seen before and one that won't be seen again for a very long time.

went on and soon after over 100 of our aircraft filled the sky."

Here is what the RAF wrote after the event: "The 10th July RAF100 celebrations held in central London are now over and what a success it was. The day started in Westminster Abbey, then followed a parade



2018























EAGLE SQUADRON MUSTANG GT

Designed to commemorate 100 years of the Royal Air Force by paying tribute to the RAF Eagle Squadrons, the Eagle Squadron Mustang GT is an homage to the Supermarine Spitfire flown by the Royal Air Force and other Allied countries before, during and after WWII.

#ESMUSTANG

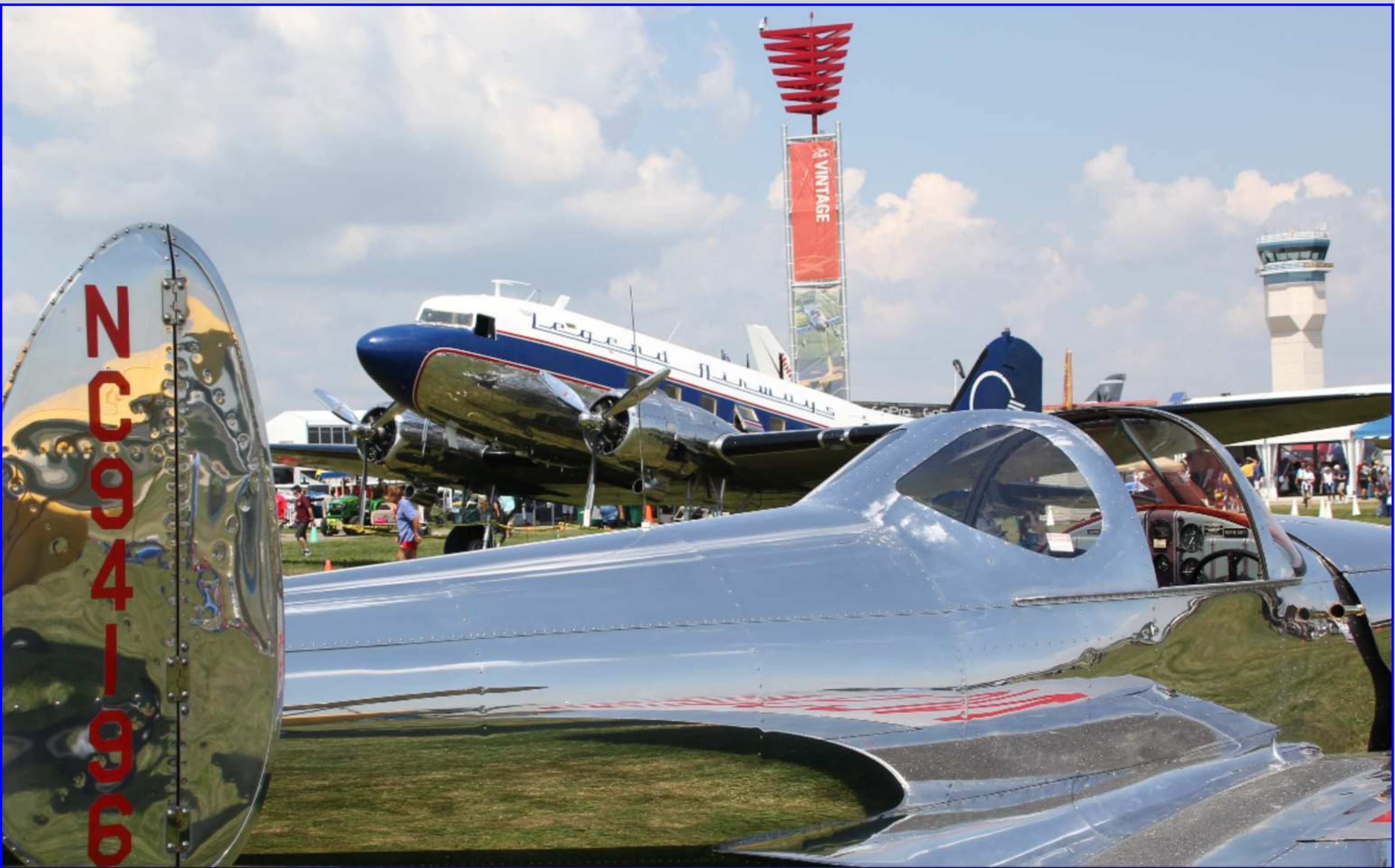
EN783

XR  K

















































































SPEEDI'S BLOG

WELCOME TO SPEEDI'S Blog.

In this issue we are featuring AirVenture 2018, the annual EAA gathering at Oshkosh, WI. Gary Rosier. Marty Stephens, Jim Cianci and Don Eller were there to represent us.

Jim Cianci also took part in the AirVenture Cup air race. This is an annual event and I flew my own airplane in the race for a number of years.



One of the regular racers did not take part. John Wilson, a friend from Spruce Creek Fly-in, had his plane already prepared and entered. Sadly he had a fatal landing accident at Spruce Creek in his award winning SX300 - RIP John. Photo above.

There seems to have been a spate of fatal

accidents involving pilots from Spruce Creek over the past couple of years. Nobody else has been hurt but it's sad to see so many accidents taking place.

Prior to 2016 we had gone a long time without any fatalities. Perhaps it's inevitable with the large number of planes based at the airport. I hope this unfortunate trend will soon end.

Of course it was on my way to AirVenture back in 2007 that I had the misfortune to have an engine failure just after landing at the end of the air race at Fond Du Lac, south of Oshkosh. The engine builder repaired the engine and I made it to AirVenture on the last day. But only to have a catastrophic in-flight engine failure just 3 hours after my departure from Oshkosh on what I hoped would be a record setting round the world flight.

I was fortunate to make an emergency off-

airport landing without any damage to my plane, apart from the wrecked engine. You can imagine that I was not best pleased with the engine builder! But at least I survived the landing in an area of southern Ohio which was notorious for fatalities due to the hilly terrain.



Having to cancel my round the world flight was the biggest blow as I had spent over 2 years in planning the flight all the way to New Zealand and back. The aim of the flight was to promote the charity Flying Scholarships for the Disabled.

Once I had installed a new (and different make) of engine I still wanted to promote the charity which is why I >>

>> decided to set some aviation world records. It was only to be two or three at first. But then things snowballed and I ended up with 101 FAI world records.



This is the most ever set by a British aviator, a record in itself. It is also the greatest number of world records ever set by a US registered home built experimental aircraft.

But all this was over 10 years ago and instead of long distance record setting flights I now fly mainly in Florida and mostly flying as lead or wingman in a formation.

Formation flying is something we specialize in at Spruce Creek. We



do it to honor veterans at events throughout Florida. Missing man flights, as they are called, are also flown for fellow aviators. As I mentioned earlier we have sadly flown too many such flights in the past couple of years.

The photo above was flown at a celebration of life for a retired Delta pilot who lived at Spruce Creek. Not that we always fly 12 planes in one flight, but that's what happened on the day to honor Sam Wells.

A missing man flight would normally have a minimum of 4 aircraft, with the #3 aircraft being the one which pulls skyward away from the flight. The 'pull' is usually done to fly west

towards the sunset - hence the description 'gone west' being used to describe the death of an aviator.

Spruce Creek Fly-in is the world's largest flying community. We have over 1,300 homes and 700 hangars so it is inevitable that we have a large number of planes.

The problem is that developers, keen to capitalize on high real estate prices linked to the flying community had grabbed land around the community to develop with high value homes. Guess what - when people move in they are surprised that they have an airport, and a high activity one, on their doorstep.

So the local NIMBY's have grasped onto the unfortunate spate of flying accidents to petition their senators to get Spruce Creek Fly-in closed down. But they do not realize the wealth of support for the airport from far and wide . . .



NEW FROM THE Barn is a regular feature about the happenings at the largest (and greatest) fly-in community in the world - Spruce Creek Fly-in. Situated on the Space Coast of Florida, just 7 miles south of the famous Speed City of Daytona Beach, Spruce Creek is a very special place. Our North America editor, Steve Wood, has lived there for since 2001, so he should know. We hope you enjoy this regular feature about a very special aviation community.

Spruce Creek Airport Information - Courtesy of the Spruce Creek POA Website - www.scpoa.com

The Spruce Creek Airport is the heart of the Spruce Creek Fly-In Community. The Airport is a private airport owned and operated by the Spruce Creek Property Owners Association (SCPOA). The Spruce Creek Airport Authority Committee through the SCPOA Board of Directors has the authority and the responsibility to oversee the operation of the Spruce Creek Airport. The SCPOA employs a full time, 24-7 security staff. The Airport runways, taxiways and aircraft parking areas are regularly patrolled and are under continuous video surveillance by the Security staff 24 hour a day.

All flying activities at the Spruce Creek Airport are regulated by the FAA and by the recommended procedures published in the Aeronautical Information Manual (AIM). In addition, a limited number of local rules and procedures have been established to promote a safe and enjoyable airport. All resident, tenants and invitees are encouraged to cooperate and abide by these procedures.

SPRUCE CREEK AIRCRAFT ARRIVAL & DEPARTURE PACKAGE - The airport management provides information to assist all pilots operating in and out of the Spruce Creek Air, viewed or printed with Adobe Reader. [Download PDF](#)

AIRPORT SAFETY VIDEO – The airport management recommends that all Spruce Creek Fly-In residents and airport users view this very good airport safety video. Click [Here](#) Airport Info Quick List.

TEL 386/760-5884 or Airport Manager cell see below.

FAX 386/761-7808 AFTER 1700386/756-6125 (Security)

VORTAC OMN112.6 MHz 165°R/13.9 DME

VORTAC ORL 112.2 MHz 020°R/35.6 DME

FSS St. Petersburg122.2 MHz

APCH CNTRL Daytona Beach ...125.35 MHz (South) 125.8 MHz (North)

INSTR APCH (Rwy 06)GPS (Private, Residence Only)

CTAF..... 122.975 MHz (pilot actuated lights 3-5-7 clicks)

AWOS..... 121.725 MHz

FUEL 100LL & JET A (self serve and truck delivery)

FUEL 386 257-7791 (on field) or 129.925 MHz (forward request to Spruce Creek)

Airport Manager - Joe Friend: 386 872-1430



IN OUR 'NEWS from the Barn' section we will be featuring news and photos from Spruce Creek Fly-in, the world's greatest aviation community. With over 1600 homes, and not all of them are hangar homes, and home to over 3000 people, there are over 650 airplanes based at Spruce Creek. But it's not all about aviation at Spruce Creek - there's golf, tennis, motorcycling and much more, as well as a Country Club and the Downwind restaurant right alongside Beech Boulevard - a major taxiway in the center of the airport. EAA

Chapter 288 (Daytona Beech) meets at Keith Phillip's hanger on the other major taxiway - Cessna Boulevard. Then there's the Gaggle Flight, which is quite something in its own right. Every Saturday morning (and sometimes on Wednesday too) members of the Gaggle Flight meet at The Big Tree which sits right in the middle of the airport. Upwards of 30 aircraft depart in flights of 3 or 4 (and sometimes more) flying out to breakfast. The arrivals back are usually spectacular, with overhead breaks the norm. Our North

America editor, Steve Wood, is part of Goofy Flight - named after his GlaStar which has the special registration N-600FY. Steve even has 'goofy' smoke on his airplane which can 'puff' or be continuous at whim. Everyone has great fun at Spruce Creek Fly-in which perhaps explains why there's a sign inside the main entrance which reads "Caution - Children And Adults At Play".



LAKES / GOOFY FLIGHT
HAVING FUN . . .

Over the next few pages there's a few 'still's from a video skit made by Lakes / Goofy Flight for the Gaggle Flight 'dining out' in 2015 . . .





Take off after Whiskey Flight





'CROW CAM' OF THE BRIEF...



AN 'OPINION' OF THE BRIEF . . .



Passing thumb up

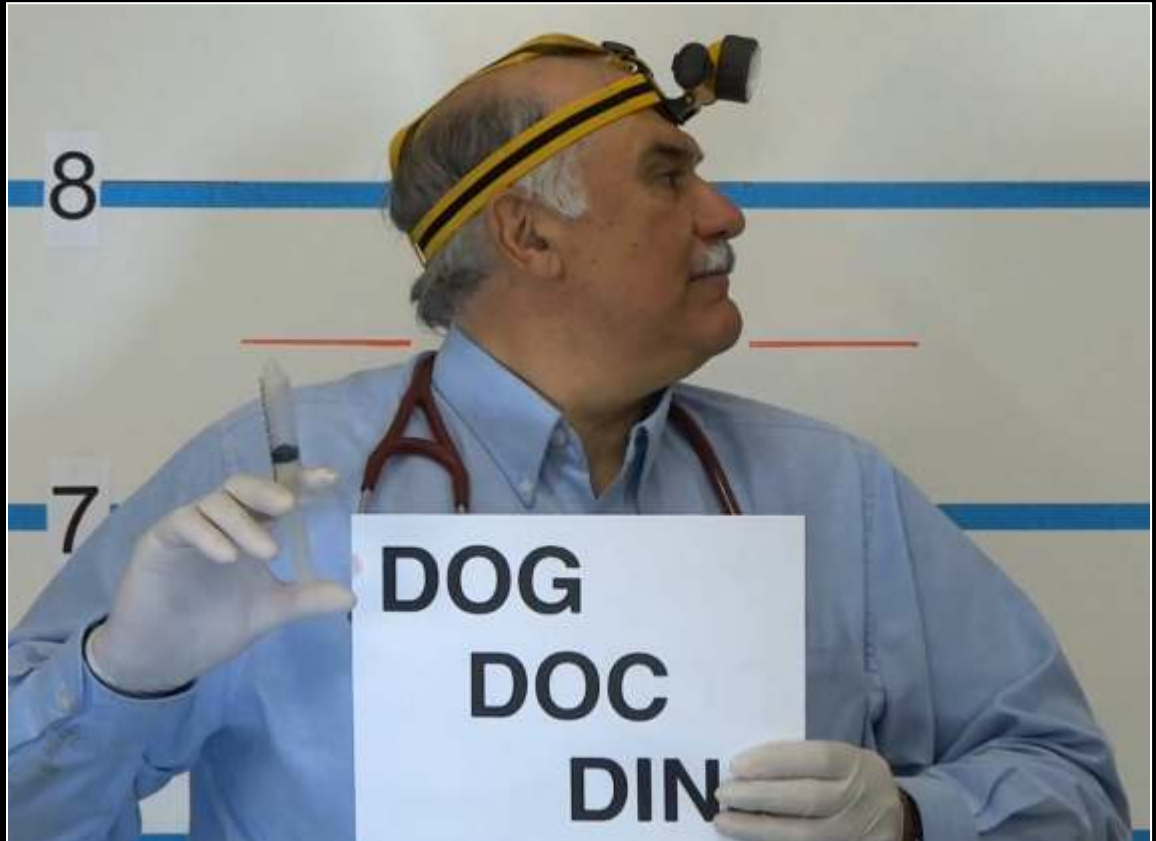
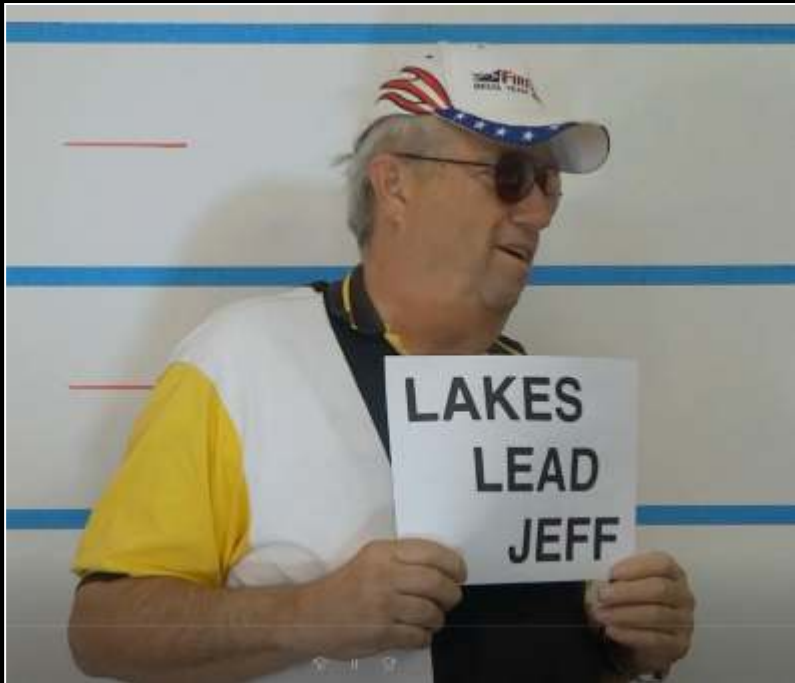


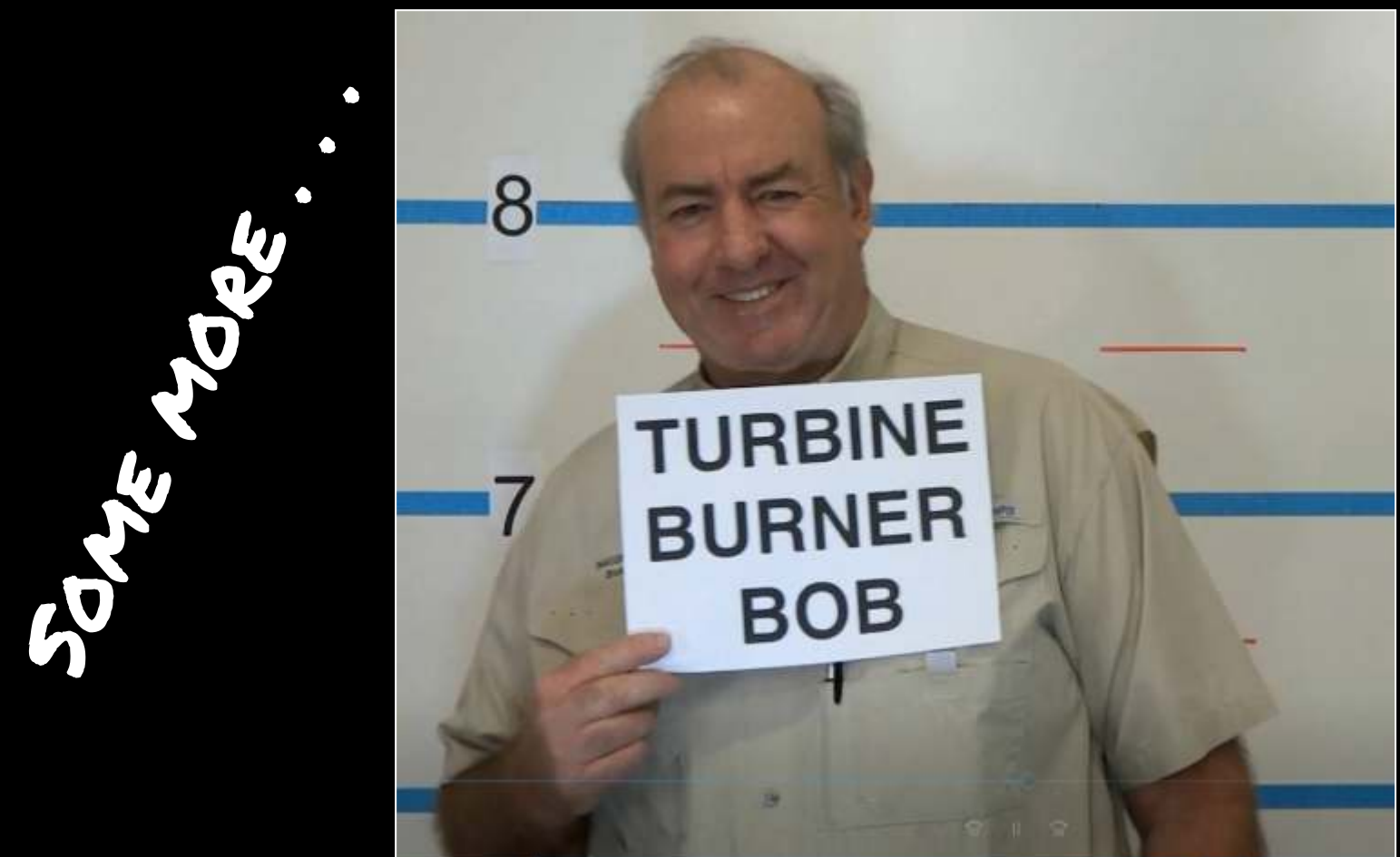


Break



JUST SOME OF
Gaggles LEAST Wanted
Lakes/Goofy Flight
at
Spruce Creek Gagle Dinner
3-7-2015





SOME MORE...



NOT FORGETTING 'SUPER DAVE' - OUR FAVORITE UPS / AEROBATIC PILOT...



IN HIS SUPER DECATHLON...

LAKES / GOOFY FLIGHT IN ACTION . . .





Producer
Jeff Edwards

Directors

Mug Shots - Jim Clark

Briefing and Walk Through - Dave Henning
Vehicles - Jeff Edwards



AND NOW SOME PHOTOS
BY GARY ROSIER FROM A
RECENT SATURDAY
MORNING AT SPRUCE
CREEK FLY-IN . . .













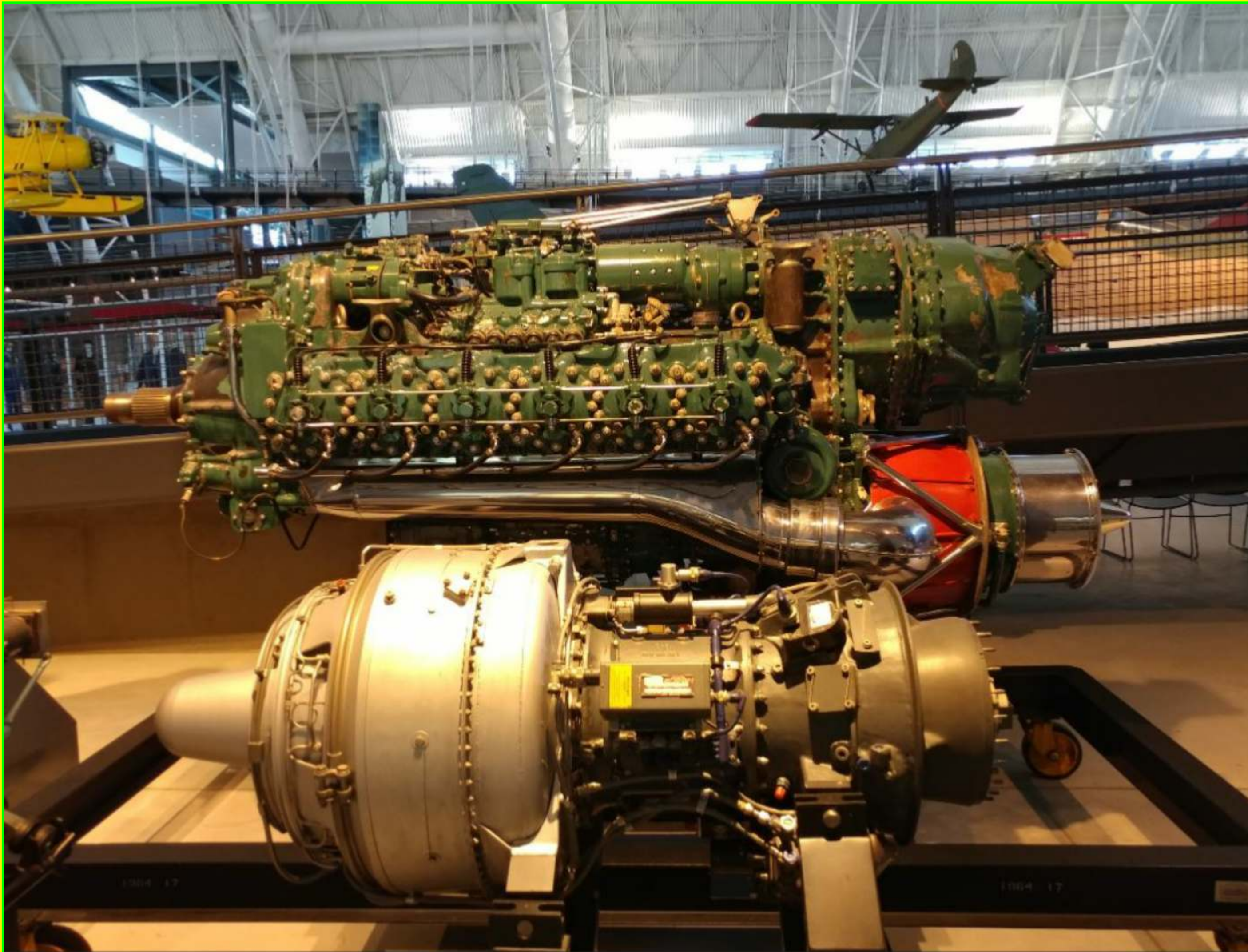


























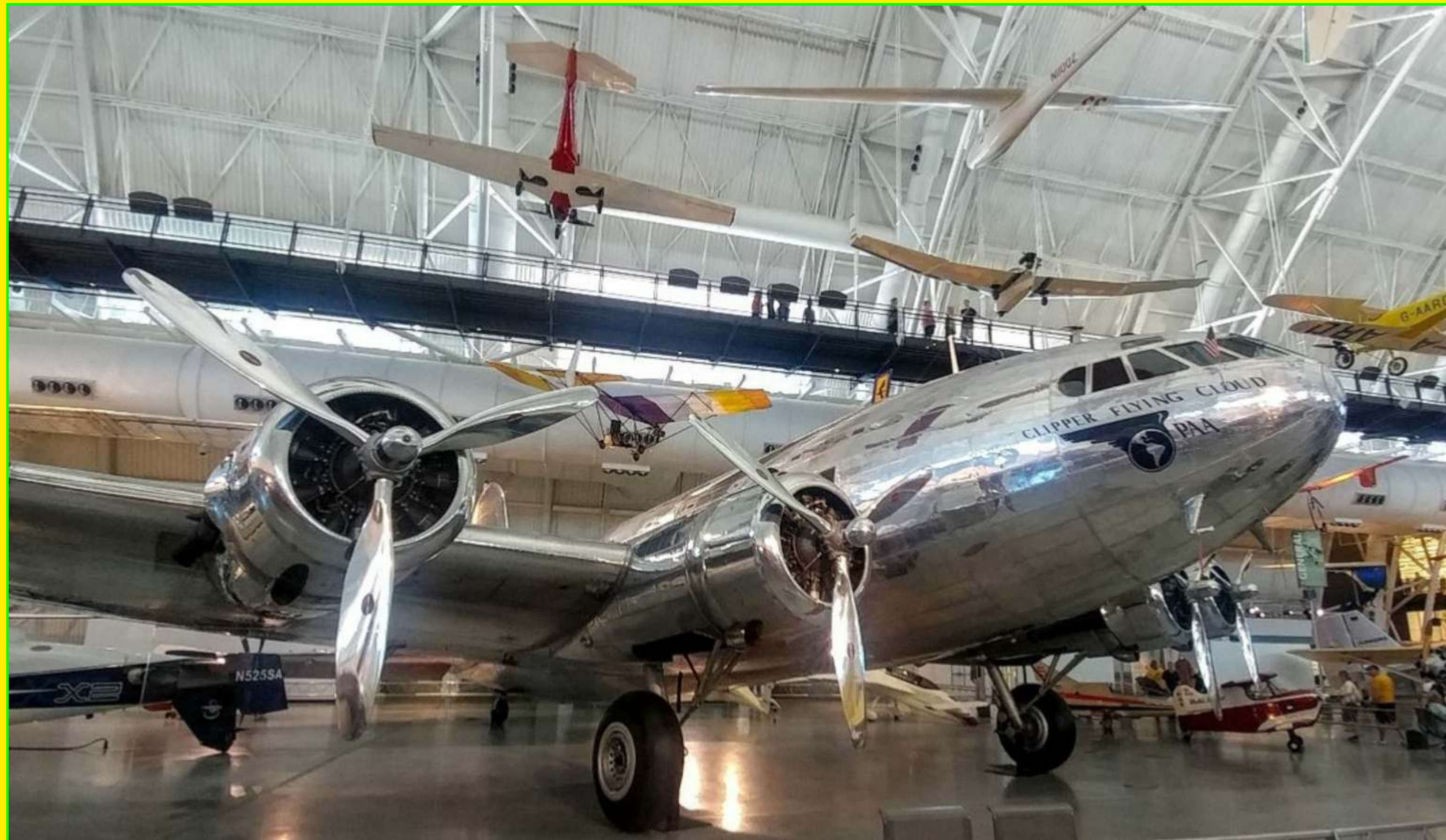












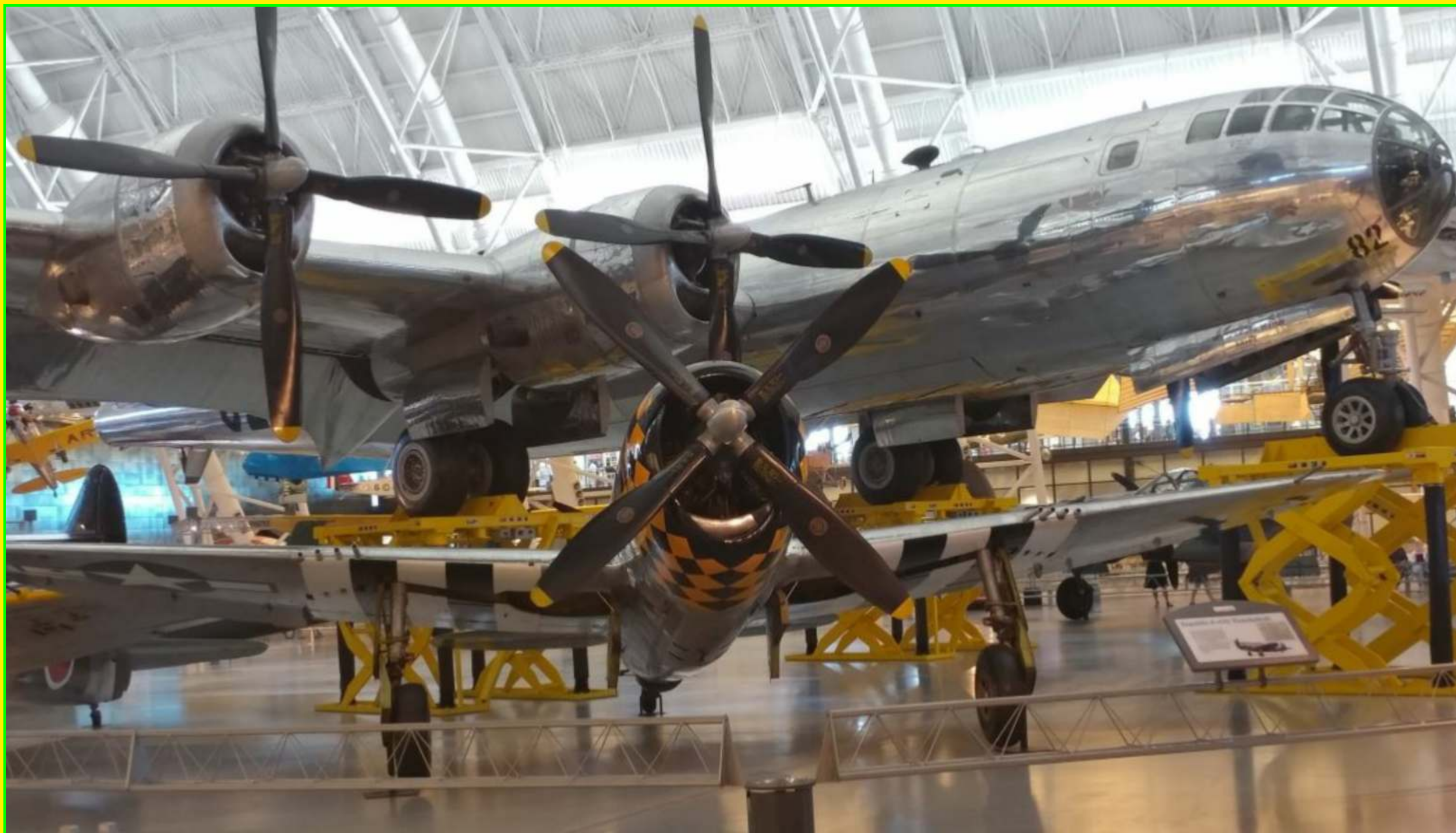






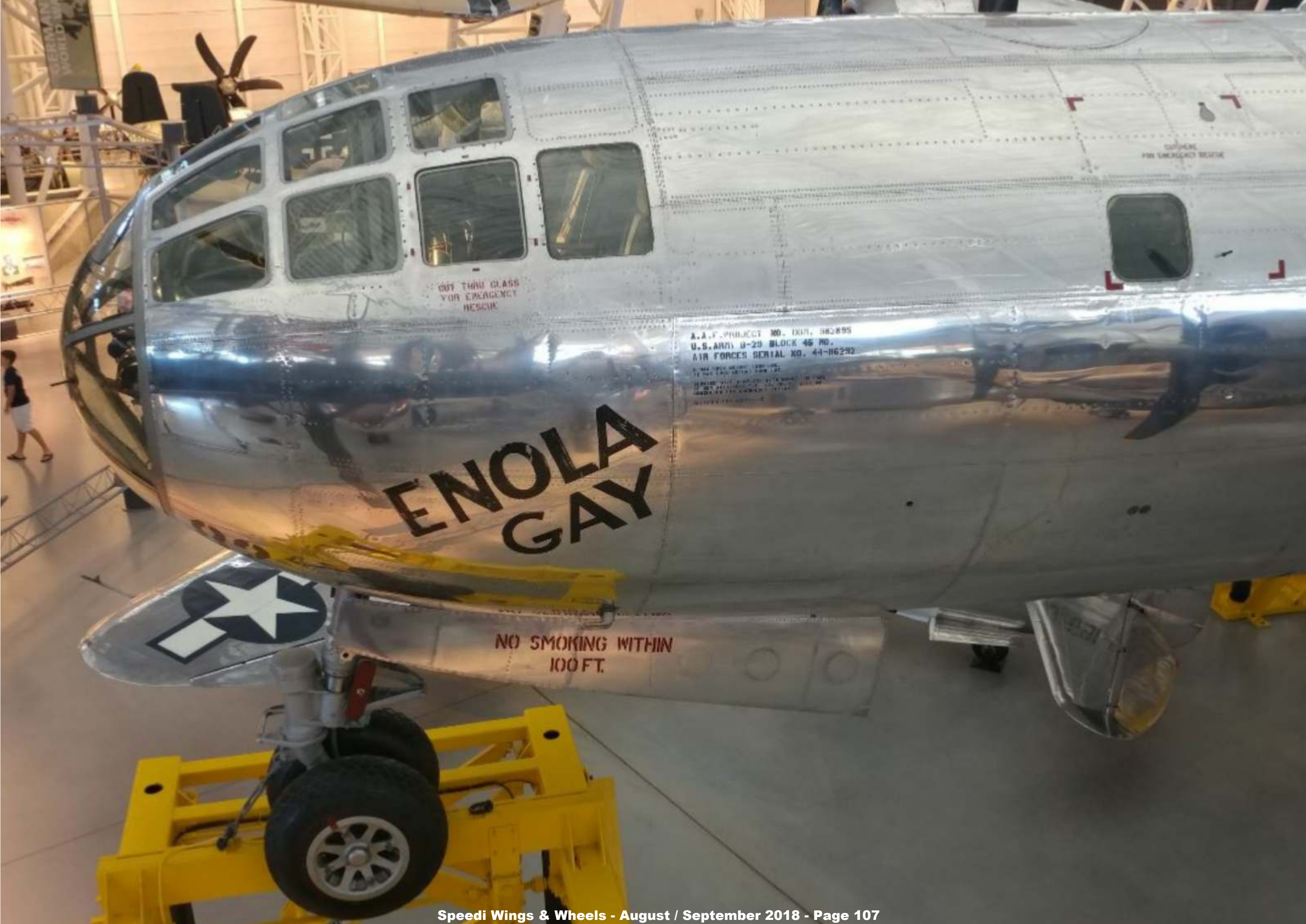






















NOSE ART & NUMBERS



In this regular Nose Art & Number feature we showcase our readers Nose Art and Special Registration Numbers. Just send in your pics, along with a bio (around 150 words) about your nose art or special registration to noseart@speedi.tv - and don't forget, spread the word.



ROLLS-ROYCE MOTOR CARS TO CELEBRATE A HOMECOMING WITH ARRIVAL OF CULLINAN IN MANCHESTER

18.07.2018

Rolls-Royce Motor Cars will celebrate a return to its spiritual home in Manchester as it debuts Cullinan, the Rolls-Royce of SUVs, just moments from the Midland Hotel in the city centre where The Hon. Charles Rolls and Sir Henry Royce first met in 1904 to establish Rolls-Royce. 114 years later, it is fitting that this transformative expression of the brand is presented in the birthplace of this iconic globally recognised marque.

Cullinan will be presented within the halls of Manchester Central, opposite the Midland Hotel and joined by a portfolio of Bespoke Rolls-Royce cars including the brand's flagship, Phantom, as well as Ghost, Wraith and Dawn. Following an exclusive evening gathering at the marque's new bespoke Wilmslow showroom, the public is invited to experience this remarkable motor car between

11am and 8pm on Thursday 19 July until Saturday 21 July.

Rolls-Royce Motor Cars has enjoyed an important period of sustainable growth in the North of England, driven by new pinnacle luxury products like Cullinan and Phantom and a growing number of entrepreneurs who choose to reward themselves with a Rolls-Royce motor car. Further reflecting this is a significant expansion of the marque's presence in the North of England with the opening of a new super-luxury facility in Wilmslow, Cheshire.

Rolls-Royce Motor Cars CEO, Torsten Müller-Ötvös, says, "Today, the North of England is a

outlets globally. To present Cullinan here is symbolic of our belief in the strength of this market and our founders' guiding principle of creating the best cars in the world for patrons of true luxury."

Rolls-Royce Motor Cars Regional Director, Julian Jenkins, says "Our dealer partner, Sytner, has invested significantly in a new, bespoke 18,000 sq ft facility to enhance the marque's presence in this growing region. New products like Cullinan and Phantom, ever expanding Bespoke personalisation offerings and sustained growth in the area as an entrepreneurial hot spot continue to drive demand. With the experienced team at Rolls-Royce Motor Cars Manchester, this new



powerhouse UK market for Rolls-Royce and the Wilmslow showroom is among our top 10 performing

facility is the perfect place from which to serve both our new and existing customers."



Mercedes-AMG Project ONE: Formula 1 technology for the road

* World premiere at the IAA.

The Mercedes-AMG Project ONE will celebrate its world premiere at the International Motor Show (IAA) in Frankfurt/Main: for the first time, the two-seater supersports show car brings the very latest and efficient, fully-fledged Formula 1 hybrid technology from the race track to the road almost par for par to represent the highlight of AMG's 50th anniversary. This high-performance hybrid is said to produce over 1,000 PS and reach top speeds beyond 350 km/h. The show car combines outstanding race track performance and day-to-day suitable Formula 1 hybrid

technology with exemplary efficiency. This is a world first.

* One turbo engine and four electric motors.

The high-performance plug-in hybrid drive system of the Mercedes-AMG Project ONE comes directly from Formula 1, and was realised in close cooperation with the motorsport experts of Mercedes-AMG High Performance Powertrains in Brixworth. It consists of a highly integrated and intelligently networked unit comprising one hybrid, turbocharged combustion engine with a total of four electric motors. One has been integrated into the turbocharger, another has been installed directly on the combustion engine with a link to the crankcase and the two remaining motors drive the front wheels.

* Rear mid-engine with up to 11,000 rpm.

The 1.6-litre V6 hybrid petrol engine with direct injection and electrically assisted single turbocharging comes directly from the Mercedes-AMG Petronas Formula 1 racing car. To achieve high engine speeds, the mechanical valve springs have been replaced by pneumatic valve springs. The vehicle is mid-engined (ahead of the rear axle) and it can easily reach speeds of 11,000 rpm, which is currently unique for a roadgoing vehicle. However, for higher longevity and the use of commercially available Super Plus petrol instead of racing fuel, it remains significantly below the F1 engine speed limit.

BENTLEY MOTORS GEARS UP FOR CENTENARY COUNTDOWN AT MONTEREY AUTO WEEK



* **Public debut of Mulsanne W.O. Limited Edition by Mulliner** – a special car to celebrate company’s forthcoming historic milestone

* **New Continental GT, Bentayga V8 and Hybrid models joined on stand by record-breaking Pikes Peak Bentayga**

* **The Home of Bentley showcases British craftsmanship and design**

* **Display of rare historic models to include iconic 8 Litre and R Type**

* **Bentley pays homage to past and future at Pebble Beach Concours d’Elegance Concept Lawn**

(Monterey, CA, 14 August, 2018)

Bentley today announced the models that the British marque will showcase during the Monterey Car Week in California August 23 – 26.

The centrepiece on display will be the Mulsanne W.O. Edition by Mulliner, a limited edition model that celebrates the company’s forthcoming centenary. Bentley will also highlight the Bentayga V8 and Bentayga Hybrid models.

The Mulsanne W.O. Edition by Mulliner pays homage to W.O. Bentley’s famous 1930 design and incorporates a genuine slice of crankshaft from the founder’s own personal car.

A true collector’s item, it will make its global public debut as the centrepiece of Bentley’s wide-ranging presence at one of the world’s most glamorous motoring occasions. It can also be viewed on August 24 at the Quail: A Motorsports Gathering; and on August 26 at the Concept Lawn – alongside its inspiration, the 8-Litre, at Pebble Beach Concours d’Elegance.

It will be joined by two new versions of the Bentley Bentayga, the world’s most luxurious SUV. The Bentayga V8 model blends exquisite luxury and power from a new generation 4.0-litre petrol engine. It offers responsive performance that is fully customisable on demand by the driver through Bentley’s Drive Dynamics system.

At the heart of the forthcoming Bentayga Hybrid model is a highly efficient electric motor and a new, turbocharged 3.0-litre V6 petrol engine with an electric range of 31

miles and CO2 emissions of just 75 g/km (NEDC) – making it the most fuel efficient Bentley ever.

Also on display will be the all-new Continental GT – a car that created the modern luxury Grand Tourer segment. Handcrafted in Great Britain, the third generation model is a statement of true luxury and takes Bentley ownership to a new level.

It’s All In The Details

Set within the walls of a private home close to the Lodge at Pebble Beach, the Home of Bentley is a four-day showcase used to host a range of activities that demonstrate Bentley’s flawless craftsmanship and design expertise.

Highlights include The Bentley Design Studio brought to life through virtual reality, colour and trim colleagues; a demonstration of the highly intricate workings of a Bentley woodshop; test drives of the latest range and a Bentley Boutique offering the finest gifts and accessories.

Among the cars displayed on different days will be the Mulsanne W.O. Limited Edition, the all-new Continental GT, plus the Bentayga Hybrid and V8 models.

Of special interest will be the record-breaking Pikes Peak car. In June, a Bentley Bentayga completed the notorious international hill climb course in Colorado in just 10 minutes and 49 seconds – the fastest ever time for the 12.42-mile (20 km) course in a production SUV.



12 July 2018, Sölden, Austria:

007 ELEMENTS, an exciting new James Bond experience built inside the summit of the Gaislachkogel mountain in Sölden, Austria, is now open to the public.

The cinematic installation was opened by actress Naomie Harris who plays Moneypenny (*Spectre*, *Skyfall*) and Jakob Falkner Managing Director of Bergbahnen Sölden.

Visitors can learn how the thrilling action sequences in *Spectre* were filmed in Sölden and see interactive displays with Jaguar Land Rover technology. The iconic Land Rover Defender driven by villain Hinx’s henchmen is situated on the cliff edge and the Range Rover Sport SVR driven by Hinx (Dave Bautista) is also on display.

The latest Jaguar Land Rover technology is on show with features from the all-new electric Jaguar I-PACE performance SUV and artificial intelligence systems.

Jaguars and Land Rovers have appeared in nine Bond films since 1983, when Roger Moore’s Bond escaped in a Range Rover Classic convertible driven by Bianca (Tina Hudson).

Laura Wood, Head of Brand and Partnerships at Jaguar Land Rover, said: “We are very excited to reach the 35th anniversary of the collaboration between Jaguar Land Rover and the Bond franchise.

“007 ELEMENTS showcases the long-standing unique partnership which is still demonstrated today, with more than 70 Jaguar Land Rover vehicles used in the most recent film, *Spectre*.”

At more than 3,000m above sea level, 007 ELEMENTS is the highest experience of its kind taking visitors on a journey through nine galleries and a plaza with stunning Alpine views. The dramatic spaces complete with an immersive soundscape showcase the fundamental elements that define the James Bond films – placing visitors inside the world of 007 and revealing how that world is made.

EON Productions’ Michael G Wilson and Barbara Broccoli said: “We are truly proud to be in partnership with Jakob Falkner and launching our latest experience, 007 ELEMENTS, on the very mountaintop in Sölden where we filmed *Spectre*. Architect Johann Obermoser, our Art Director Neal Callow and Tino Schaedler have created a Bondian lair worthy of a Ken Adam set in which visitors immediately become enveloped in the cinematic world of 007.”

BMW Group sales increase in July

13.08.2018 - Munich.

* Year-to-date sales up in all major sales regions

* BMW brand grows sales in July and year-to-date

* July sales of BMW X3 increase 52.3% as China production ramps up

* Over 70,000 electrified vehicles delivered in year to date

Worldwide sales of BMW Group vehicles continue to grow, with more vehicles delivered to customers last month than in any previous July. A total of 181,051 (+0.2%) BMW, MINI and Rolls-Royce vehicles were sold in the month, bringing year-to-date sales up to 1,423,565 (+1.6%).

“Our focus on sustainable, profitable sales growth is proving successful, as we continue to attract more customers than ever, despite the various headwinds currently affecting the industry,” said Pieter Nota, Member of the Board of Management of BMW AG responsible for Sales and Brand BMW.

“Customer demand for our X vehicles continues to be very high and now we’ve increased production capacity by localising the BMW X3 in China and South Africa, we can already see the positive effect that additional availability has on sales. The continuing, growing demand for our electrified vehicles is also very



pleasing, with deliveries of BMW i, BMW iPerformance and MINI Electric vehicles up by over 40% in the year to date,” Nota continued.

In the first seven months of the year, deliveries of BMW Group electrified vehicles totalled 71,310 vehicles worldwide, an increase of 40.6% on the same period last year. July sales of BMW i, BMW iPerformance and MINI Electric vehicles totalled 10,649 (+30.9%), confirming the BMW Group’s position as a leading global provider of premium electrified mobility.

Improved availability of the locally-built BMW 5 Series plug-in hybrid (fuel consumption combined: 2.3-2.1 l/100 km; electricity consumption combined: 13.9-13.3 kWh/100 km, CO2 emissions combined: 52-47 g/km) in China, helped electrified sales in the BMW Group’s largest overall market increase more than six-fold in the year to date, with a total of 8,078 units sold so far in 2018. Several other major markets also achieved significant growth in year-to-date electrified sales, including the USA (13,874 /

+39.5%) and the UK (9,923 / +34.3%).

July sales of all BMW brand vehicles edged up on last year’s result with a total of 154,531 vehicles delivered worldwide (+0.7%). Sales in the year-to-date are up 1.9% (1,213,833). All major sales regions contributed to the increase in deliveries.

With production of the BMW X3 ramping up in South Africa and China, in addition to existing capacity in the USA, worldwide sales of that model totalled 15,482 in July, an increase of 52.3% compared with the same month last year. Full worldwide availability of the BMW 5 Series since the beginning of the year has also led to significantly increased sales of that model in the first seven months: 221,732 (+16.2%).



WEC – Pier Guidi and Calado win at Silverstone

Silverstone, 19 August 2018

As they say in the world of distance running, “your head can go where your legs can’t”. The 6 Hours of Silverstone, third round of the Super Season of the 2018-19 World Endurance Championship boiled down to this for Ferrari no. 51 of AF Corse. After a stark performance gap in qualifying mainly due to the BoP that still separates the 488 GTE Evos from the GTE-Pro class leaders, the race saw an unexpected win thanks to the Italian team’s magnificent strategy and the skills of world champions Alessandro Pier Guidi and James Calado. It was the first victory for the car equipped with the Evo kit. However, the race only turned out well for car no. 51, with no. 71 hampered by an accident and the GTE-Am class cars quite off the pace for the entire race.

GTE-Pro. The prototypes plunged into chaos at the start, which also involved the GT cars in the second half of the group. The two Ferrari 488 GTE Evos were hit by other competitors but just suffered a few dents. Both Sam

Bird and Alessandro Pier Guidi managed to move up a position. Bird, who put in an excellent stint, was in second before the pit stop.

The first twist came after two hours and 20 minutes. A Full Course Yellow rewarded the fuel saving strategy of car no. 51, which was able to make its pit stop during the neutralisation period. This allowed James Calado to return to the track in second place, behind the Ford no. 66. Shortly after, the US car suffered a problem that gifted the lead to no. 51. However, the joy of seeing the 488 GTE Evo in front for the first time only lasted a few laps until the undercut tactic of Porsche no. 92 gave the advantage to Kevin Estre and Michael Christensen. Meanwhile bad luck dogged no. 71, which was hit by a prototype while in fourth with Davide Rigon at the wheel. The Italian had to drive a full lap on three wheels, which worsened the state of the car. The 488 GTE Evo came back on track after 34 minutes and finished in eighth place. Less than two hours from the end another Full Course Yellow was

called and the masterful work by the AF Corse mechanics saw the Ferrari go back on track in front of the two Porsches. Again, the three top drivers made their pit stops during the neutralisation period, which the Ford no. 67 failed to do. This put it out of the running despite being the fastest car on track. Alessandro Pier Guidi’s perfect management in the last 90 minutes finished the job to give Ferrari one of the most beautiful and deserved victories in its WEC history. Second place went to the Porsche of Bruni-Lietz, and third to the Ford of Priaulx-Tincknell.

GTE-Am. The Ferraris were in difficulty in the GTE-Am class. The 488 GTEs had already struggled in practice and things didn’t improve during the race. The best-placed Ferrari on the grid, car no. 54 Spirit of Race, crewed by Giancarlo Fisichella, Thomas Flohr and Francesco Castellacci, was involved in an accident at the start, losing three laps for repairs to the front end. Both car no. 61 of Clearwater Racing (Mok-Sawa-Griffin) and no. 70 of MR Racing (Ishikawa-Beretta-Cheever III) attempted a comeback but were frustrated by two drive-through penalties for speeding in the pitlane. In the end, the car of Clearwater Racing was the best-placed Ferrari, in fifth. MR Racing finished seventh, the no. 54 Spirit of Race ninth. The overall win went to Alonso-Buemi-Nakajima on Toyota. The next round is on 14 October 14 at Fuji, Japan.

GONE CRUISIN'

Gary's Hot Rods & Cruisers



Welcome to Gone Cruisin', our regular feature on the cruisin' scene brought to you by Gary Rosier. Primarily from in and around Central Florida, but we'll be including interesting events around the USA. More pics from Gary at <http://www.carsplaneslandscapes.com/>



All photos for this feature: Gary Rosier

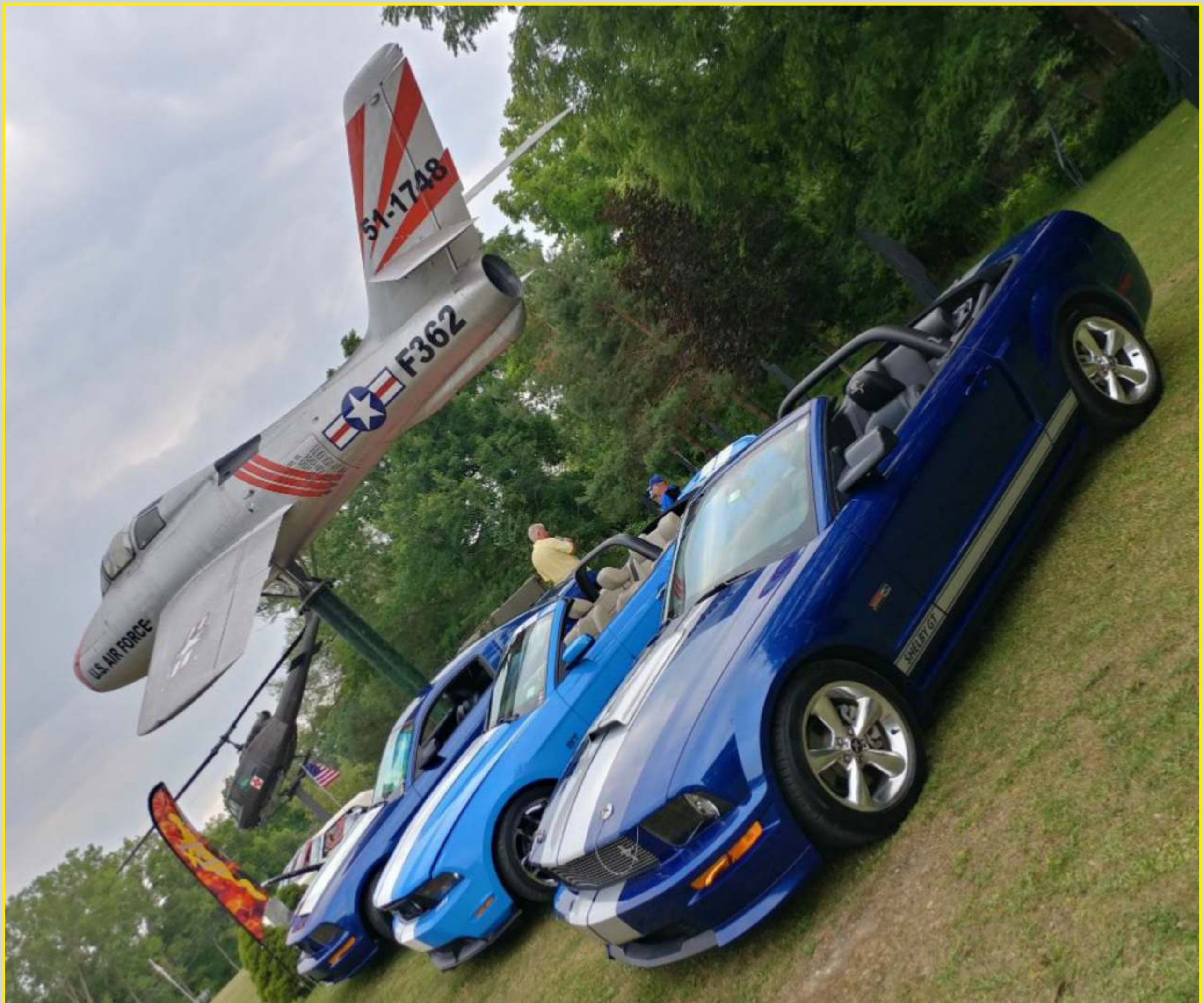










































Swearingen SX300

Specifications:

Length	27.0 ft (8.23 m)
Wing span	34.0 ft (10.36 m)
Wing area	110.0 sq ft (10.17 m ²)
Empty weight	1,100 lb (499 kg)
Gross weight	1,400 lb (635 kg)
Max. takeoff weight	1,400 lb (635 kg)
Max. payload	300 lb (136 kg)
Max. cruise speed	180 kt (333 km/h)
Max. climb rate	1,000 ft/min (305 m/min)
Service ceiling	10,000 ft (3,048 m)
Range	1,000 nm (1,852 km)
Max. fuel capacity	40 gal (151 L)
Max. fuel burn	10 gal/hr (37.9 L/hr)
Max. fuel consumption	10 gal/hr (37.9 L/hr)
Max. fuel consumption	10 gal/hr (37.9 L/hr)

History of the SX300:

The Swearingen SX300 is a single-engine, four-seat, low-wing aircraft. It was developed by Swearingen Aircraft Company in 1980. The SX300 is a popular aircraft for both private and commercial use. It has a maximum cruise speed of 180 knots and a maximum range of 1,000 nautical miles. The SX300 is also known for its excellent climb rate and service ceiling.

Our Media Correspondent Jim Cianci with his plane - SX300

























SureFly®
Re-imagine Flight.

Introducing the first American-made personal hybrid electric helicopter!

Built for work - with 550 lbs payload, and maximum two hour flight time.

Built for safety - with full powertrain redundancy and a ballistic parachute.

Expected price - \$200,000.

Pre-order today @ workhorse.com.

WORKHORSE 













[illegible]



















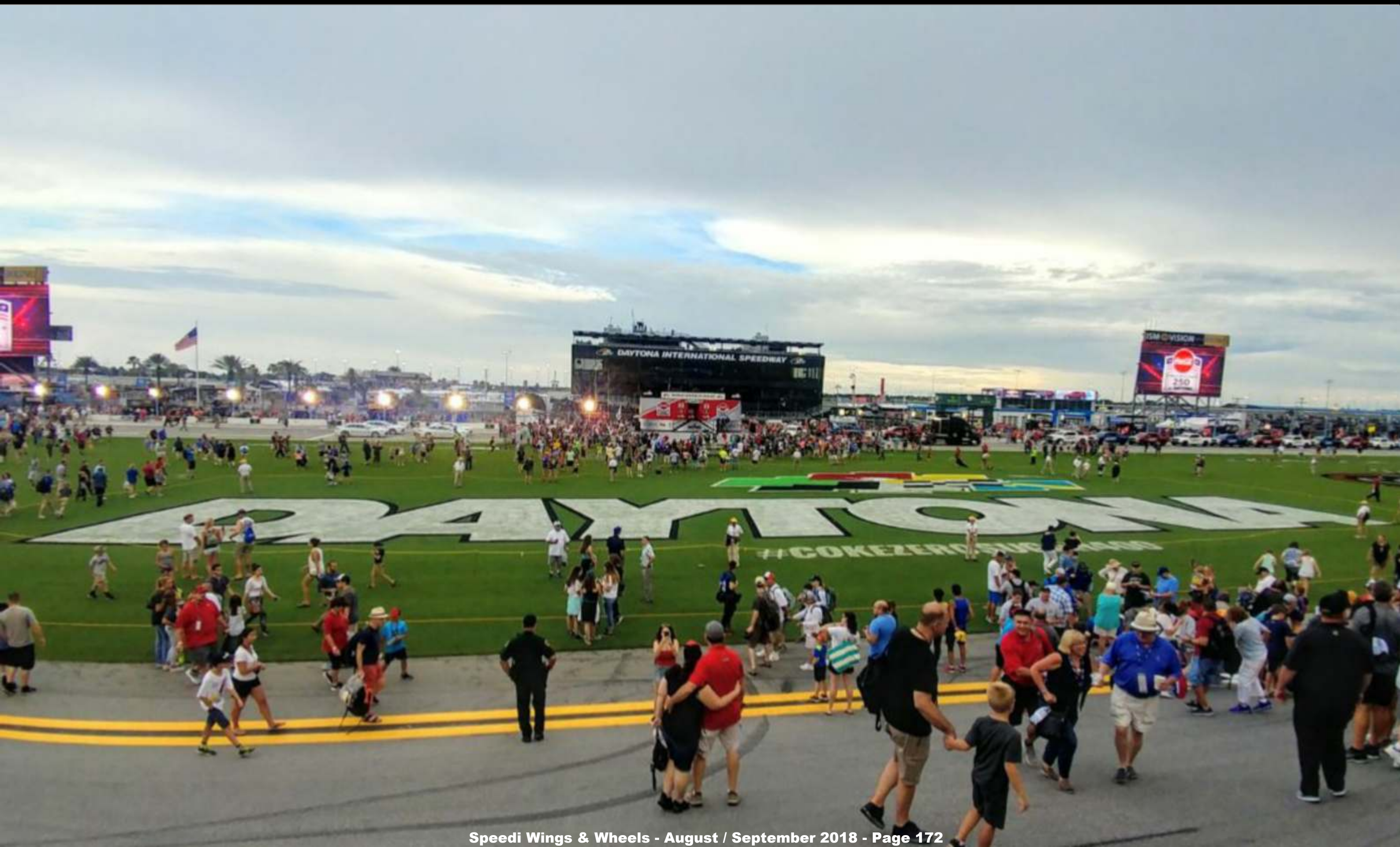












Speedi

Wings & Wheels

www.speedi.tv

THE NEXT ISSUE OF SPEEDI WINGS & WHEELS FEATURES THE NATIONAL CHAMPIONSHIP AIR RACES FROM RENO, NV AS WELL AS MUCH MORE AVIATION AND MOTORSPORT ACTION

BOOKMARK OUR WEB ADDRESS - WWW.SPEEDI.TV - SPREAD THE WORD



FREE!
Online
Magazine